

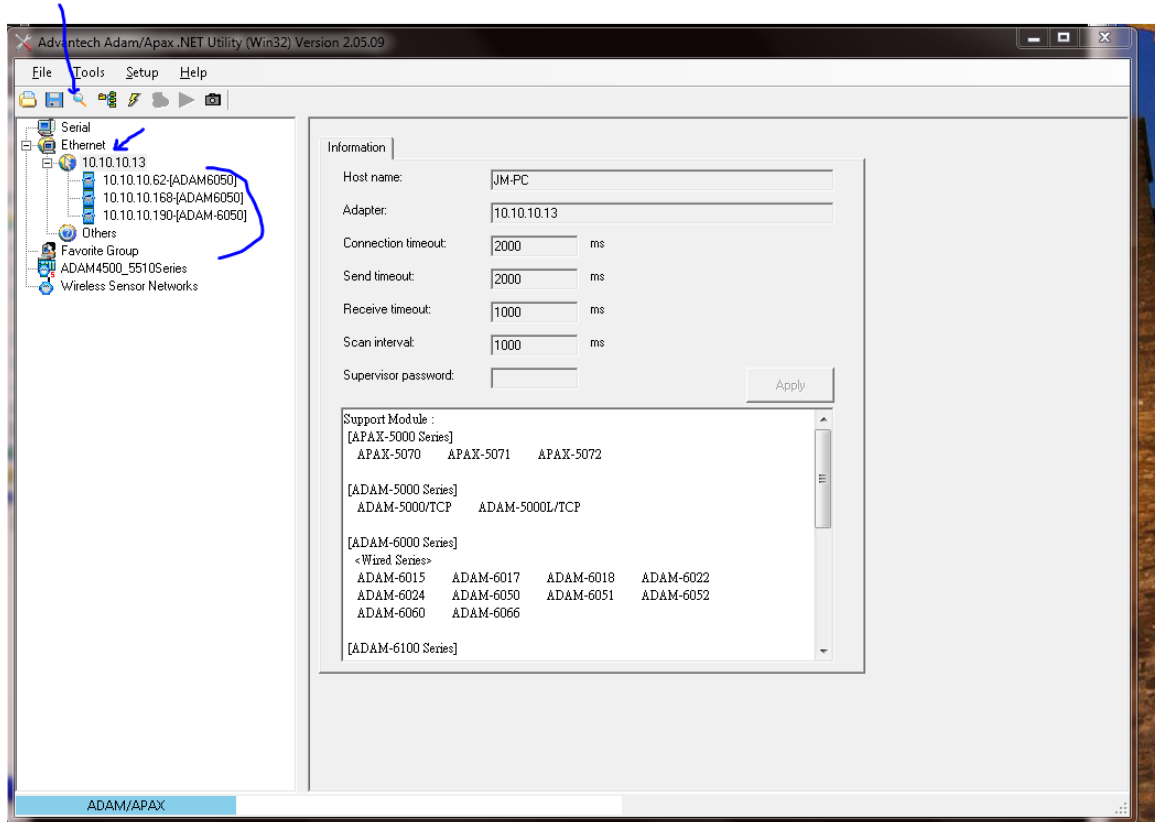
## Setup of Adam onto Network, Onto ViconNet, Sensor wiring, Alarm in Viconnet

Below is Adam Discover tool

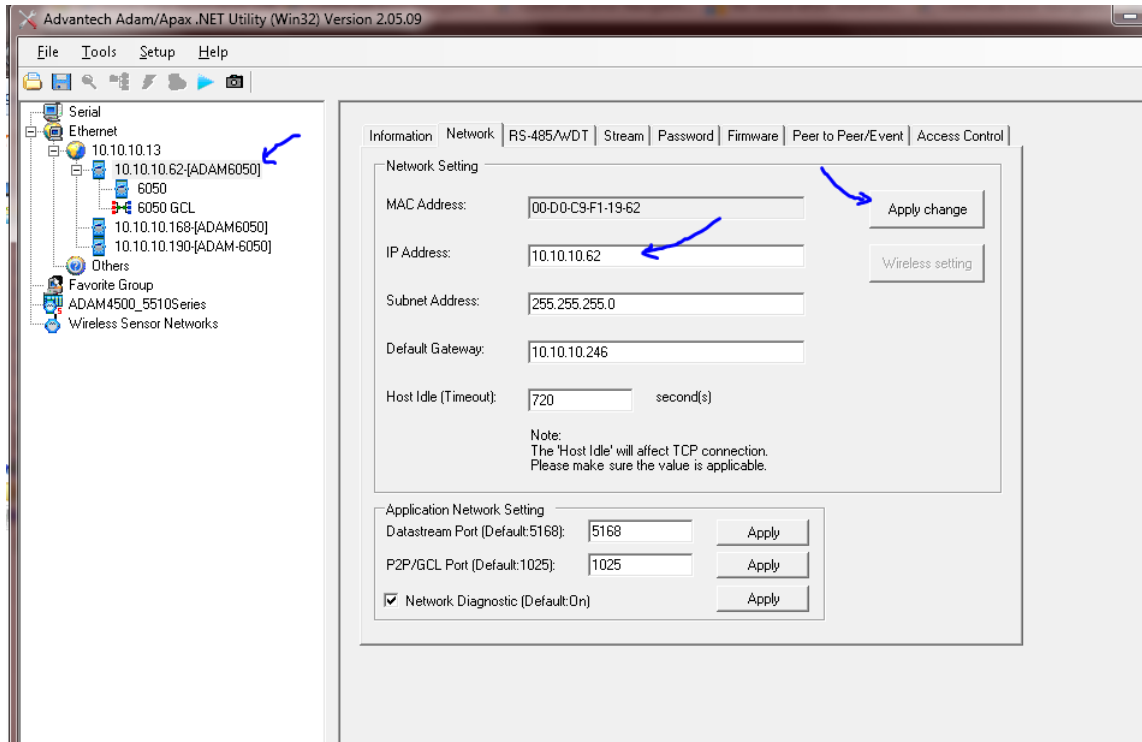
What it shows and how to correctly discover

Under Ethernet click on IP  
then the little magnify glass.

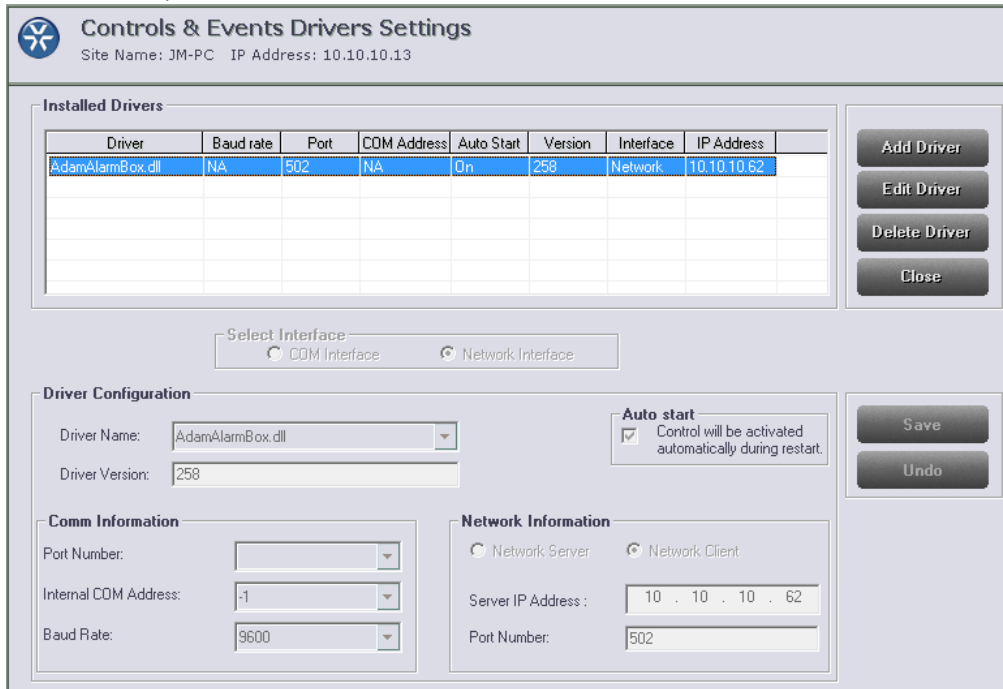
The available Adam units will show up



To set IP click on one of them ( if password is requested enter all . ' 00000000 ' )

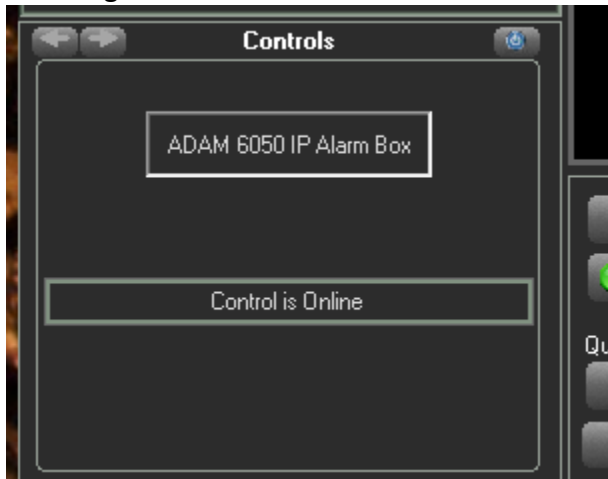


In ViconNet , add the ADAM unit



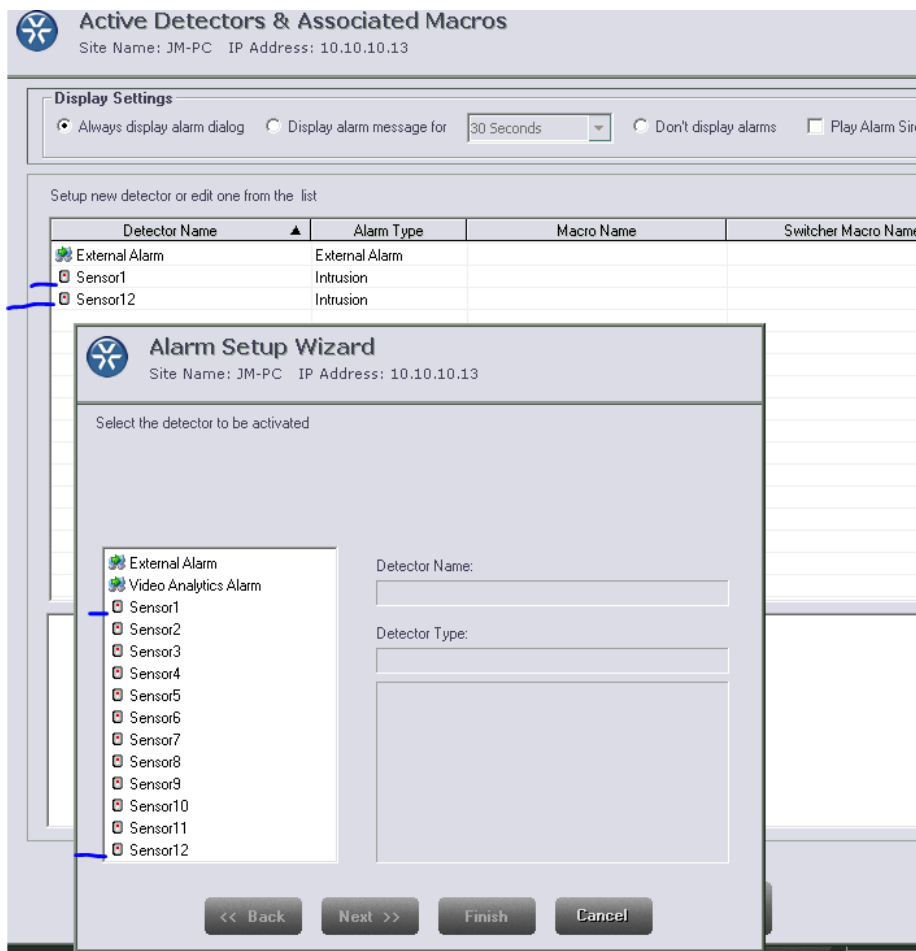
Save, close, logout and login to ViconNet ( no need to exit )

After login at lower left of ViconNet 'online' should be seen



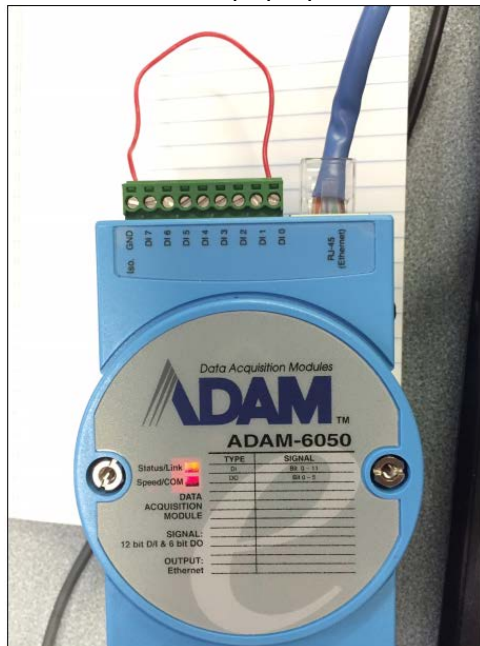
Settings in ViconNet.

Go into Alarms , Alarms will have 12 sensors. I've added 2 of them into my system.



Finally a short on **D10 to Gnd** on the Adam....

Creates an alarm pop up on ViconNet. This alarm can then be mapped to a display macro.



The screenshot displays the ViconNet NVR Peak software interface. The main window shows a site list on the left and a video feed area in the center. An alarm pop-up window is overlaid on the video feed, showing a table of alarm events. A blue arrow points to the 'Sensor1' entry in the table.

Alarm Source	Alarm Type	Local Time	Remote Time
Sensor1	Sensor	01:38:07 P...	01:38:07 P...
V922D-N3...	Activi...	07:15:54 P...	07:15:54 P...

Buttons: Mute, OK, Stop, Stop Macro, Bookmark, Print, Links, No. of Recording Cams and Mics: 0, Scheduler state: Active, 5/11/2016 1:38:24 PM