

# Tech Tip V1031

## Testing External Inputs on IQinVision Cameras

### Source

Factory Certified Product (FCP) Interface Document

### Source

**Name:** IQinVision Technical Support

**Model:** IQA3x, IQ86x, IQ76x, legacy MJPEG models supporting external input.

**Version/Firmware:** Most recently available on [www.iqeye.com](http://www.iqeye.com)

**Required:** -Computer must be able to connect to the cameras web interface. If camera needs addressing, please see technical video on addressing camera, available here: <http://www.iqeye.com/support/technical-videos>

#### Optional/Recommended Products

IQfinder – Windows utility used to discover cameras on a network

IQaccess full or demo version

#### Web location for download of Proprietary files:

<http://www.iqeye.com/support/technical-downloads/utility-programs>

**Brief Description of Integration:** A simple test to verify that onboard physical trigger inputs on camera are functional.

**Business Description of Product:** Integration with external inputs with dry contact alarm input connectivity.

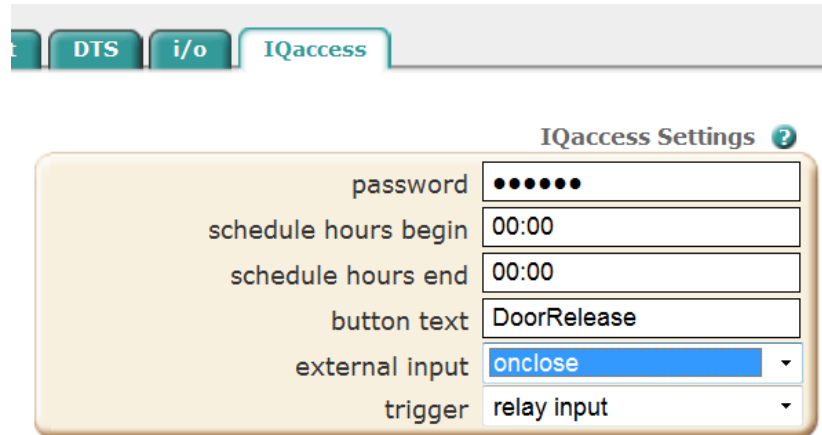
### Instructions

If a third party device is being used as a third party normally-open/normally-closed alarm input and is not functioning properly, there is an easy way to verify if the problem is following the camera.

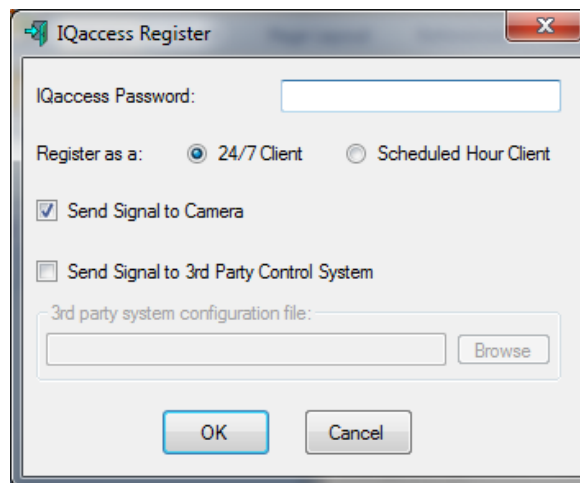
This test uses the IQAccess pop-up window as the alarm input action “result”. This is not a mandatory step, however, it offers the simplest, most immediate results, so it is recommended.

1. If IQAccess demo or full version is not installed on the camera, gather the mac address of the camera and send to [support@iqeye.com](mailto:support@iqeye.com) and request a demo version of IQAccess. The license is good for 90 days and is free.
2. Install the IQAccess license on the camera. Upon reboot the camera will have an IQAccess license listed in the Security tab. It will have an additional tab, IQAccess.

3. Configure the IQAccess tab:
  - Set the 'external input' field to onclose.
  - The default password is 'doorbell'. This will be needed in further steps.



4. Download and install the IQAccess plugin for the PC from the following link: <http://www.iqeye.com/support/technical-downloads/utility-programs>
5. Ensure that IQAccess is being run with Administrator rights. If necessary, navigate to C:\Program Files (x86)\IQinVision\Iqaccess and right click on the IQAccess executable. Select the option to Run as Administrator
6. If the camera is not listed, select the "Add Remote" button, enter it's IP address and select OK.
7. If the camera is listed as "Not Registered" in the IQAccess column, highlight the camera and select the "Connect" button
8. A dialog box will appear, prompting for a password. This is where the 'doorbell' password is entered:



9. Now the camera is listed as "Connected" in the IQAccess column of the PC plugin

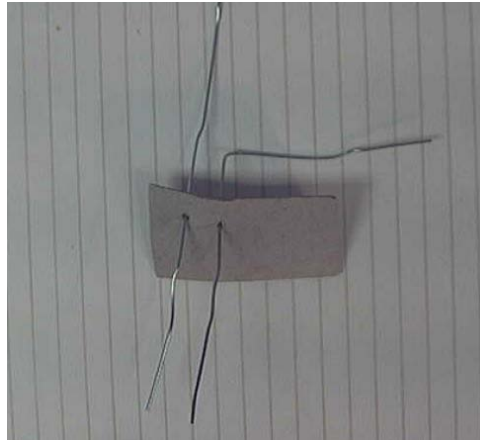
<b>IQEYE1A1471</b>	<b>IQA35N</b>	<b>00:50:1A:1A:14:71</b>	<b>192.73.220.148</b>	<b>Connected</b>	<b>Y</b>
--------------------	---------------	--------------------------	-----------------------	------------------	----------

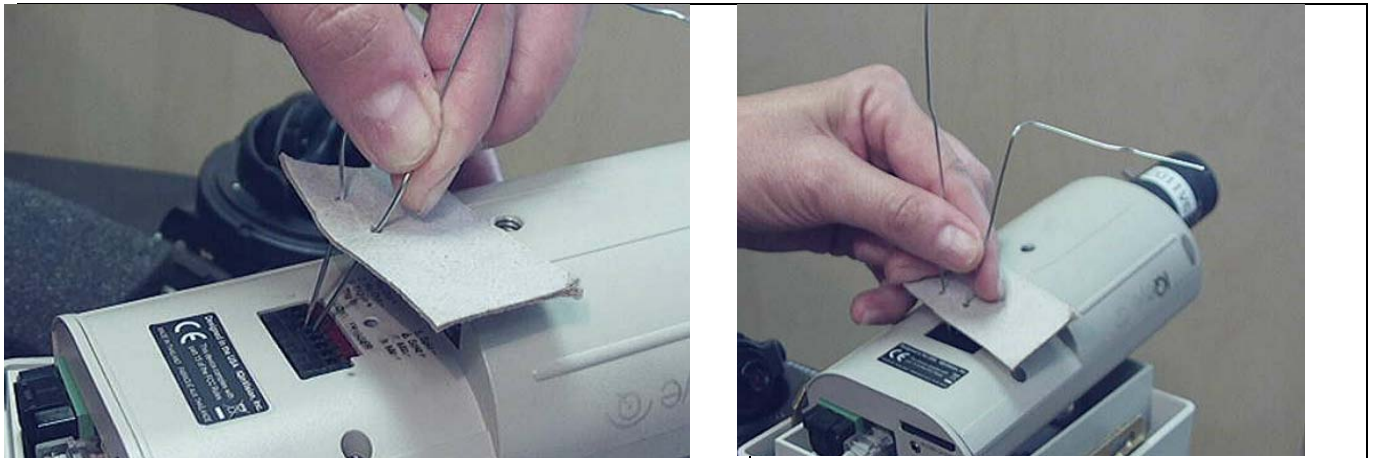
<b>Connect</b>	<b>Unregister</b>	<b>Web Page</b>	<b>Add Remote</b>	<b>Delete Camera</b>	<b>Refresh</b>	<b>Help</b>
----------------	-------------------	-----------------	-------------------	----------------------	----------------	-------------

Ready

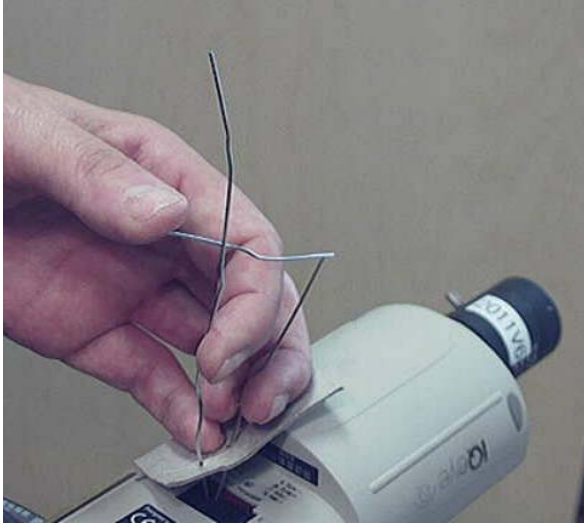
10. Make a device with two straightened paperclips. One paper clip will have a 90 degree bend on one end. If necessary, the paperclips can be fed through a piece of cardboard for easier control. See below for example:



11. Ensure that the paperclips are not touching each other and feed into alarm input pins on the camera. On an IQ76x series, the alarm input pins are pins 3 and 4. See below for example:



12. Rotate the paperclip with the 90 degree bend so that it eventually touches the other paperclip. This will cause a 'closed' condition in the camera and any configured options will be triggered.



13. If the camera receives the correct input information, the IQAccess popup window will appear:



### End of Tech Tip V1031

Testing External Inputs on IQinVision Cameras