



Technical Support Document

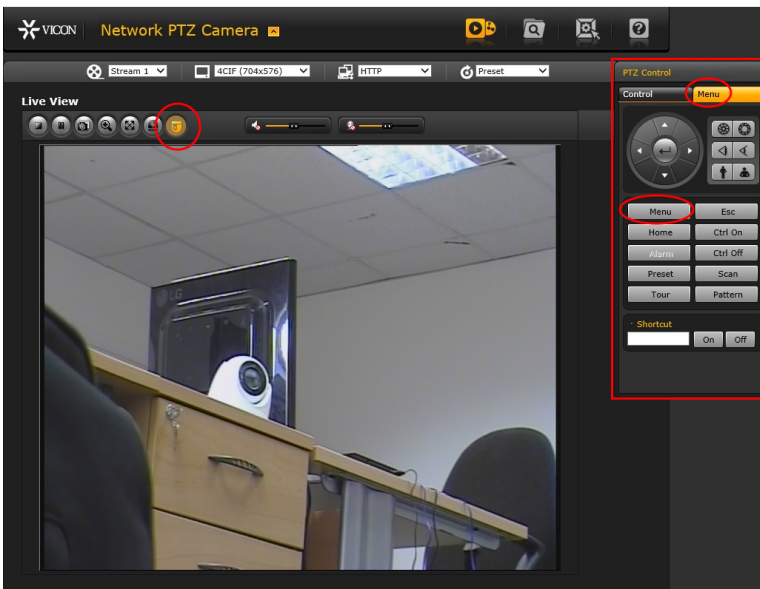
<http://www.vicon-security.com> EMEAsupport@vicon-security.com
Telephone +44 (0)1489 566330

Using the SN660V-P with ViconNet

As the SN660V-P is an early Hybrid model of PTZ IP camera some of its extended features are not integrated with the ViconNet Video management software (VMS). This means that some functionality has to be programmed and accessed via the camera web browser rather than the ViconNet software.

Although full PTZ and lens controls are available through ViconNet it is recommended that Presets and Tours are set up using the camera web browser. Additionally as Tours cannot be called directly from ViconNet it is recommended that the Home position function is used to trigger a tour.

Some later versions of ViconNet include a Link feature. This can be used to pre programme the URL of the Dome(s) so that it is easy to access the camera's web browser when required.



Using Internet Explorer enter the IP address of the camera to see the web page.

Select PTZ control as circled.

In the PTZ section select the menu tab and menu for the Dome menu.



The Dome menu is accessed using the PTZ and lens controls to increment settings and/or to enter/exit settings.

Most menu levels are saved or exited by scrolling to the bottom step and pressing Exit to escape or Right Pan to save.



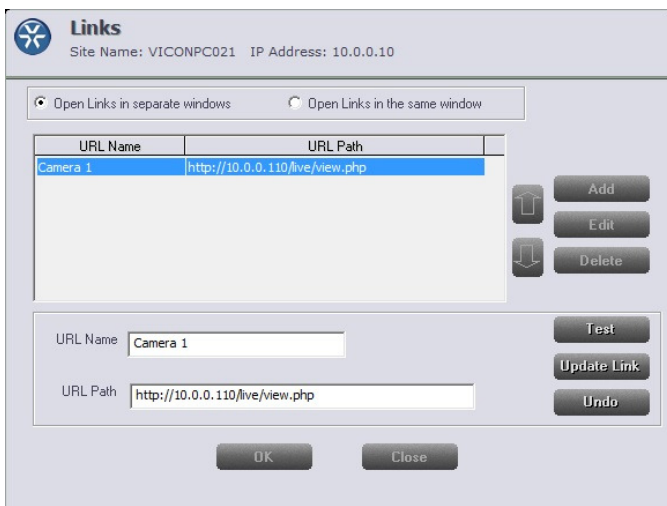
Technical Support Document

<http://www.vicon-security.com> EMEAsupport@vicon-security.com
Telephone +44 (0)1489 566330



Setting and recalling Presets can easily be programmed using the control section of the PTZ controls. You can recall Tours here but programming of Tours is carried out in the camera menu itself going through the menu or by pressing the Tour shortcut button.

Note: Due to the way that Presets are handled by ONVIF, Tours should only be made up of Presets stored via the web browser and not in ViconNet. Presets stored in ViconNet can only be recalled in ViconNet.



To facilitate any camera programming you can pre-program the camera IP addresses into the Links section of ViconNet. This will give you quick access to the web browser.

If you are worried about security the links section can be enabled or disabled in the authorisation section.